



INSTALLATION INSTRUCTIONS

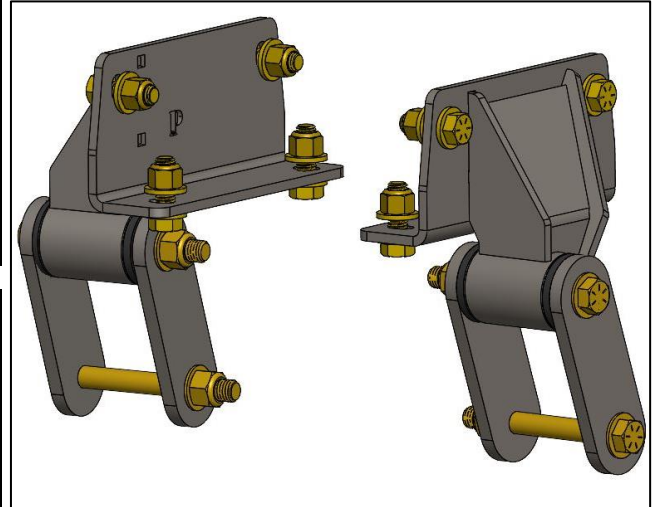
Part #	Description
WFO SF-6131	05-15 Toyota Tacoma Rear Shackle Flip

10076 Streeter Road Suite #7, Auburn, CA 95602
Phone: 530.268.9494 www.wfoconcepts.com

WFO 6131 INSTALL INSTRUCTIONS

BILL OF MATERIALS	
Qty. 1 - WFO SF-6131-D	Driver Side Mount
Qty. 1 - WFO SF-6131-P	Passenger Side Mount
Qty. 4 - DAY M02153BK	Main Bushings
Qty. 2 - WFO 4261	¾" Bushing Sleeve for a 9/16" Bolt
Qty. 4 - WFO 610x	4", 5", or 6" Depending on Purchase Length
Qty. 2 - WFO 4263	Center Shackle Bar (5" & 6" Shackles Only)
Qty. 8 - 1/2" Bolt Kits	1/2" x 1.5" Grade 8 Bolts, Washers, & Nuts
Qty. 2 - ½" Bolt Kits	½"x4.5" Grade 8 Bolts, Washers, & Nuts
Qty. 4 - 9/16" Bolt Kits	9/16"x5" Grade 8 Bolts, Washers, & Nuts

TOOLS NEEDED
Standard Socket Set and Wrenches
3/8" Impact gun
Grinder
Air Hammer W/ Chisel or Plasma Cutter (Not needed but helpful)
Black Spray Paint
All Purpose Grease for spring bushings

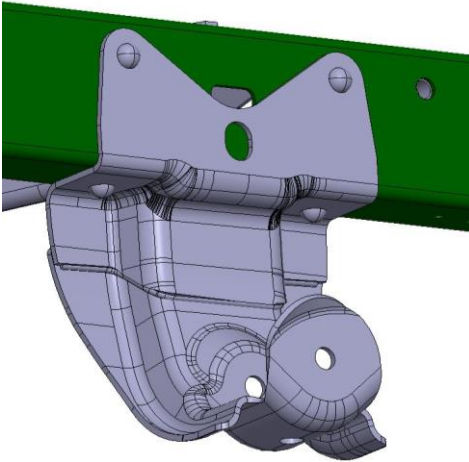


WARNING!
<p>*** Read all instructions thoroughly from start to finish before beginning the job! If these instructions are not properly followed, severe frame, suspension, tire, or body damage may result to the vehicle!</p> <p>*** WFO Concepts recommends that you exercise extreme caution when working under vehicles supported by jack stands.</p> <p>*** WFO Concepts recommends all installation to be performed by a professional shop/service technician. Product failure due to improper installation will not be covered under WFO's warranty policy.</p> <p>*** Whenever altering steering and suspension components it is always recommended to get a professional alignment afterwards ***</p>

TECH NOTES:
<ul style="list-style-type: none"> - This kit is intended for using OEM or aftermarket Chevy ½ ton 63" leaf springs. - Brackets come raw steel. Either paint them before starting install or send them out to get powder coated. The shackles come Zinc coated and do not need to be coated. - Depending on which length shackle you choose, this shackle flip kit will net you the following lift heights: 4" Shackle = 3.75" of Lift 5" Shackle = 4.25" of Lift 6" Shackle = 4.75" of Lift - Modification to the exhaust tail pipe we be needed. Install of the shackle flip drops the eyelet of the spring lower on the frame. - Depending on which driveline your truck has, CV or U-joint to U-joint, an added axle degree shim might be needed. - The shackle flip will push your axle forward roughly ½" to 1". Purchasing a WFO 1700-2.5-KIT to relocate and center your axle in the wheel well may be needed. - Re using old U-bolts isn't recommended. If possible, purchasing newer 5/8" U-bolts will be necessary.

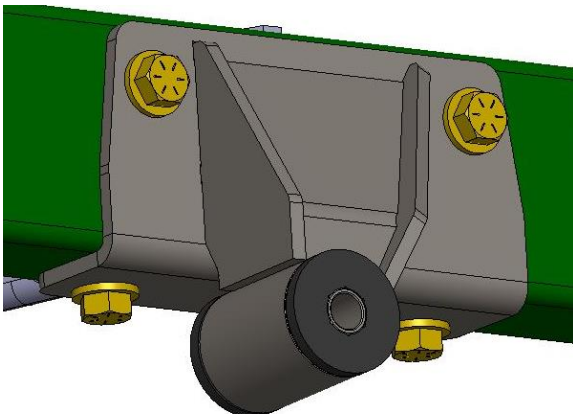
REMOVAL:

1. Start by supporting the rear frame with jack stands so the rear suspension can fully droop. Make sure to chock the front tires if working from the ground. Also support the rear axle with jack stands. And the use of a floor jack will be necessary for moving the axle and leaf springs into place.
2. Remove tires.
3. You will only need to remove the rear section of the leaf spring and shackle.
4. Use a plasma cutter, torches, or a grinder to grind the heads of the rivets off. Then use a chisel and sledge hammer to knock the bracket off the frame.
5. Once bracket is removed, clean the frame up of any excess undercoating and/or dirt.



INSTALL:

1. Before install, make sure to paint all raw WFO brackets with a quality grade paint or powder coat.
2. Using good quality grease, install bushings (DAY M02153BK) and center bushing sleeves (WFO 4261) into each bracket.
3. Make sure that you are installing the "D" on the Driverside and "P" on the Passengerside. The Toyota Tacoma frames are tapered, so installing these brackets backwards will not work.
4. Using the (4) 1/2" G8 bolts, washers, and nylock nuts, start by installing them in the face of the bracket. Leave loose.
5. Snug up all hardware, making sure bracket is tight up against the frame.
6. Taking (1) of the 9/16"x5" G8 Bolt and hardware, loosely bolt up a pair of shackles on each side of the bushing.
7. Only on the 5" & 6" shackles, use the 1/2"x4.5" G8 Bolt and hardware and bolt the Center Shackle Bar (WFO 4263) in between the shackles. Leave loose.
8. Swing your springs up into place and use the remaining 9/16" bolt. Tighten all 1/2" Hardware to 55 Ft. Lbs. and all 9/16" Hardware to 85 Ft. Lbs.





10076 Streeter Road Suite #7, Auburn, CA 95602

Phone: 530.268.9494 www.wfoconcepts.com

Follow us on all Social Media Platforms!

Remember to share your photos and tag #WFOCONCEPTS to be featured on our page!

