



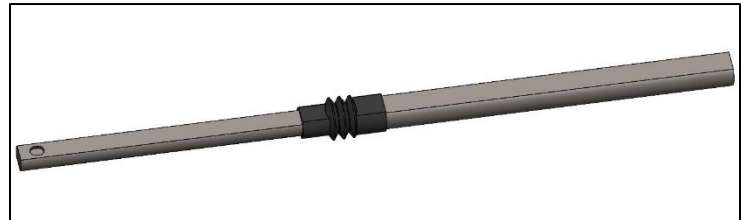
INSTALLATION INSTRUCTIONS

Part #	Description
BRG-450036	36" Telescoping Steering Shaft

10076 Streeter Road Suite #7, Auburn, CA 95602
Phone: 530.268.9494 www.wfoconcepts.com

BRG-450036

BILL OF MATERIALS	
BRG-450036	Universal 36" Telescoping Steering Shaft
TOOLS NEEDED	
Tape Measure Sharpie/permanent pen Electric Grinder with Cut off wheel Spray Paint 1/8" Allen wrench	



WARNING!

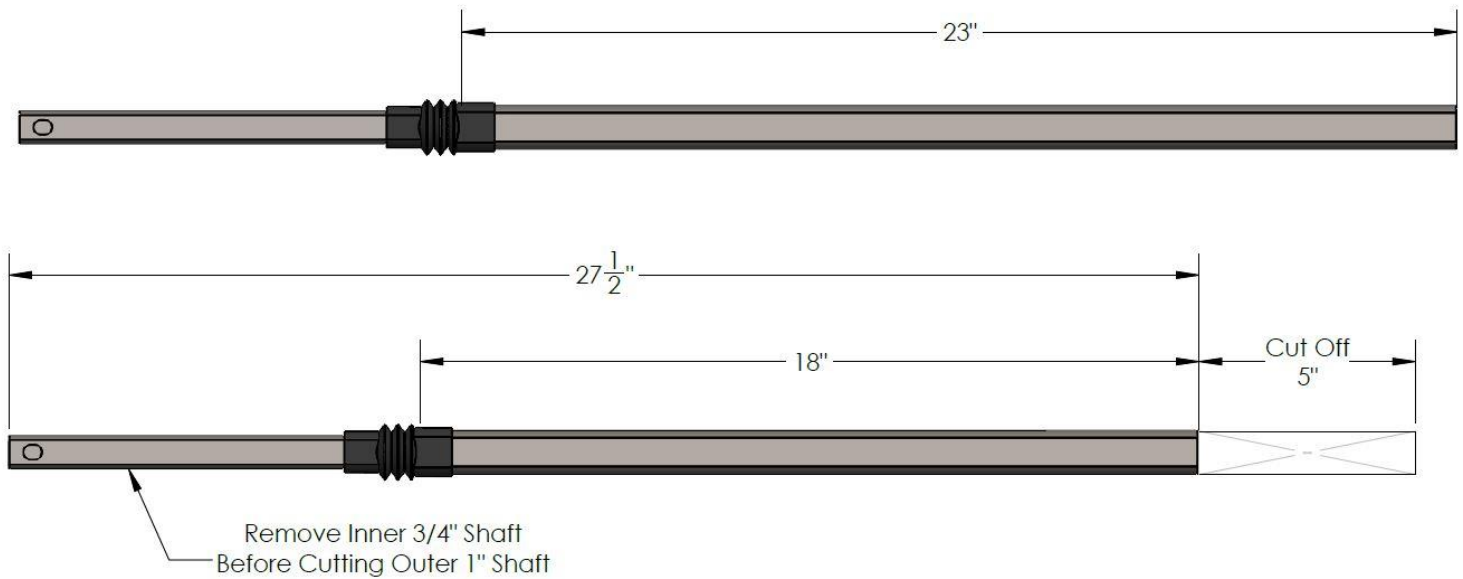
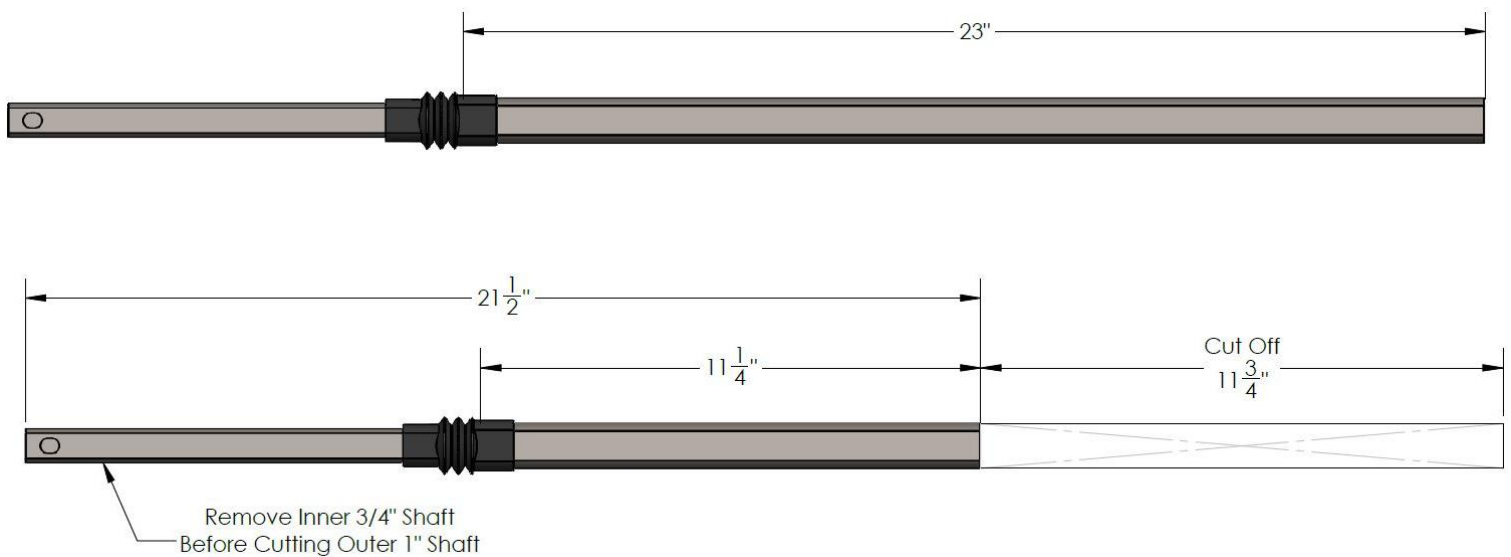
- *** Read all instructions thoroughly from start to finish before beginning the job! If these instructions are not properly followed, severe frame, suspension, tire, or body damage may result to the vehicle!
- *** WFO Concepts recommends that you exercise extreme caution when working under vehicles supported by jack stands.
- *** WFO Concepts recommends all installation to be performed by a professional shop/service technician. Product failure due to improper installation will not be covered under WFO's warranty policy.

TECH NOTES:

- The kit is intended for the adjustable 30"-36" long, 3/4" to 1" DD, steering shaft. This kit works in both 2005-2015 Toyota Tacoma SAS kits that run either the OEM IFS Toyota style steering box or the PSC Big Bore Steering Box.

PREP:

1. First determine which steering box you're using on your build. Layout your Borgeson 36" Universal steering shaft on a flat surface.
2. You will need to remove the inner 3/4" shaft before cutting to your final length. This is just so you don't cut both items at once, as well as to not get any cut shavings inside the slip area. Slide the rubber boot back enough to expose the set screw. Using a 1/8" allen, remove this screw. You will only be cutting the larger 1" DD side of the assembly. Check the dimension below for the correct cut lengths.
3. One cut, clean up all edges of any burrs. Re assemble, replace set screw, and paint.
4. Install shaft with the 1" DD going into the upper steering column U-joint. The 3/4" DD side will slide into the appropriate 3/4" U-joint at frame side steering box.

Using a Toyota IFS Steering Box**For PSC Big Bore Box**



10076 Streeter Road Suite #7, Auburn, CA 95602
Phone: 530.268.9494 www.wfoconcepts.com

Follow us on all Social Media Platforms!

Remember to share your photos and tag #WFOCONCEPTS to be featured on our page!

