



## INSTALLATION INSTRUCTIONS

Part #	Description
WFO 5364	2005 – 2017 Ford Super Duty Coilover Lift Brackets

10076 Streeter Road Suite #7, Auburn, CA 95602  
Phone: 530.268.9494    www.wfoconcepts.com

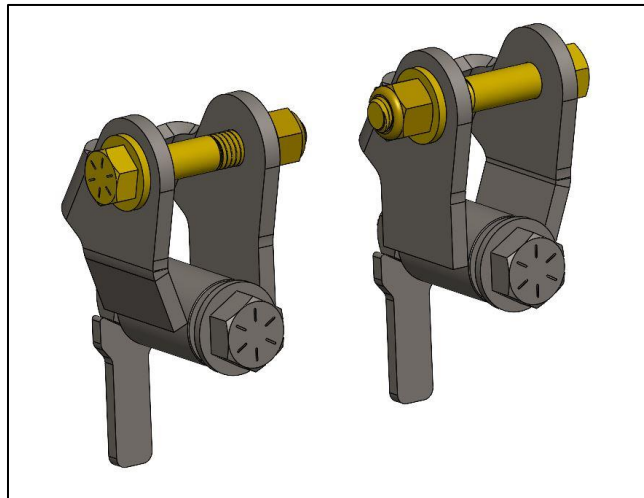
### WFO 5364

#### BILL OF MATERIALS

WM-17003-D	Qty. (1) Driverside Mount
WM-17003-P	Qty. (1) Passengerside Mount
5/8" Bolts	Qty. (2) 5/8"-11x3" Grade 5 Bolt
5/8" Washers	Qty. (2) 5/8"-11 Grade 5 Washer
WM-40101	Qty. (2) 5/8"-11 Crimp Flag Nut
1/2" Bolts	Qty. (2) 1/2"-13x3" Grade 8 Bolt
1/2" Washers	Qty. (2) 1/2"-13 Grade 8 Nylock Nut
1/2" Nuts	Qty. (4) 1/2"-13 Grade 8 Washer

#### TOOLS NEEDED

- 1/2" Impact Gun
- 3/4", 15/16" Sockets
- 3/4" Wrench
- Grinder
- Welder
- Spray Paint



#### WARNING!

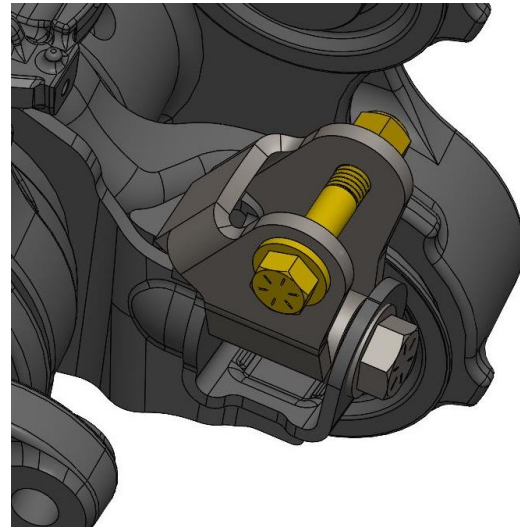
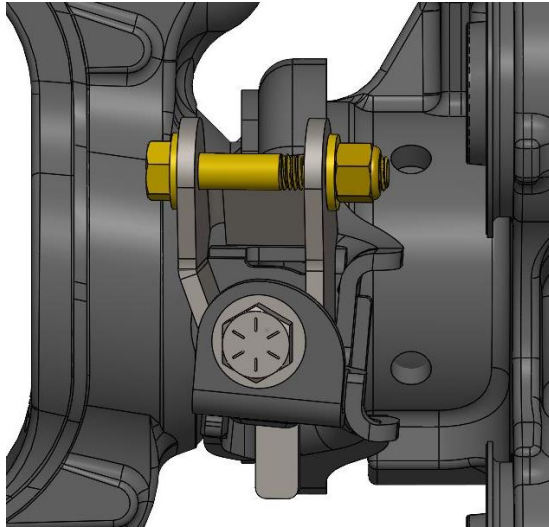
- \*\*\* Read all instructions thoroughly from start to finish before beginning the job! If these instructions are not properly followed, severe frame, suspension, tire, or body damage may result to the vehicle!
- \*\*\* WFO Concepts recommends that you exercise extreme caution when working under vehicles supported by jack stands.
- \*\*\* WFO Concepts recommends all installation to be performed by a professional shop/service technician. Product failure due to improper installation will not be covered under WFO's warranty policy.

#### TECH NOTES:

- These brackets are intended for use of 2.0" – 2.5" Coilovers in the factory 2005-2017 Ford Super Duty shock location.
- Installers have the option to weld these in.
- These brackets move the pivot point up from factory location about 2-5/16" and outwards about a 1/4".

## INSTALL:

1. Start by removing any old shocks and hardware.
2. Due to different conditions of axles some slight tweaking of the outer tab of the factory shock bracket may be needed to fit these mounts. As well as running a 5/8" drill bit through the factory bolt hole to clean up any debris.
3. You do have the option to weld the WFO 5364 brackets in place. If so, grind any paint or rust away on the flat portion of the factory shock mount where this mount will land. If not, apply a coating of spray paint to your brackets prior to install.
4. On the Driverside, the bent tab will be facing outwards. As well as the weldable tab of the bracket will sit on the flat portion of the factory shock mount.



5. Slip the bracket into the shock mount and insert the provided 5/8"-11x3" bolt and washer. The 5/8" welded flag nut will slip from underneath in the factory pocket. Make sure the crimp portion of the flag nut is facing away from the bolt when threading it together.
6. Repeat on opposite side. Torque the 5/8" bolt to 85 ft. lbs. When using the 1/2" bolt kit provided, torque that to 60 ft. lbs.