



INSTALLATION INSTRUCTIONS

Part #	Description
WFO TBB-F-2512	2014+ Jeep JL / JT Track Bar Brace

10076 Streeter Road Suite #7, Auburn, CA 95602
Phone: 530.268.9494 www.wfoconcepts.com

WFO TBB-F-2512

Bill of Materials	
WM-24000	Track Bar Brace Bracket
Qty. 2 - Bolts	3/8"-16 x 1" Grade 5
Qty. 4 - Washers	3/8" Grade 5
Qty. 2 - Nuts	3/8"-18 Grade 5
Qty. 1 - Bolt	M14-1.5x90mm Grade 10.9
Qty. 2 Washers	M14 Grade 10.9
Qty. 1 Nut	M14x1.5 Nylock Nut
Tools Needed	
Metric Socket Set: 18mm Metric Wrenches: 18mm Standard Socket Set: 9/16" Standard Wrench Set: 9/16" 3/8" Ratchet 1/2" Impact gun 1/2" Extension Bolt/Alignment Pin Pry Bar Hammer/Dead Blow Floor Jack and Jack Stands Blue Loctite	



WARNING!

- *** Read all instructions thoroughly from start to finish before beginning the job! If these instructions are not properly followed, severe frame, suspension, tire, or body damage may result to the vehicle!
- *** WFO Concepts recommends that you exercise extreme caution when working under vehicles supported by jack stands.
- *** WFO Concepts recommends all installation to be performed by a professional shop/service technician. Product failure due to improper installation will not be covered under WFO's warranty policy.

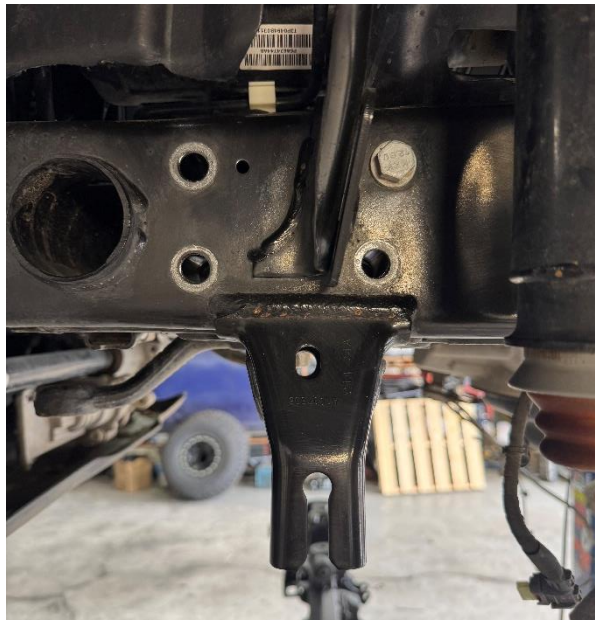
INSTALL NOTES:

- This install will re-use some of the factory hardware, keep all parts till the end.
- This bracket is designed to fit over the factory 2024+ Jeep JL and/or Jeep JT front frame side track bar bracket. It is intended to help support the load of added aftermarket suspension and tires to the chassis. Factory brackets have been prone to rip off frame when excessive angles are applied when off roading.
- This bracket is not intended to repair or replace the stock track bar bracket. If the stock track bar bracket is damaged, complete required repairs before installing the WFO Track Bar Brace.

REMOVAL:

1. Park vehicle on level ground. Make sure the Jeep is in Park and the E-brake lever is applied. It's not necessary but it can be easier with the removal of the front driver tire. Make sure the axle is supported by appropriately rated jack stands.
2. To help gain more room, remove the lower sway bar bolts on both sides of the axle with an 18mm socket and wrench so that you can swing the bar up and out of the way.
3. Remove the upper track bar bolt with a 21mm socket on a ½" impact gun and wrench. You will have to remove the track bar from the bracket. Stick a pry bar in between bracket and bushing to pry it down and out. If working on the ground on jack stands it is a good idea as a safety precaution to run opposing ratchet straps from the frame to the axle in an X pattern, from the Driverside to the Passengerside. This prevents the jeep's coils from pushing the jeep from side to side.
4. Next you will use a 18mm socket on an impact gun and remove the 3 of the 4 steering box bolts. Note which bolts come from where, the 2 longer ones go in the front 2 holes closest to the bumper. Leave the back upper most bolt in the steering box. **Fig A.**

Fig. A



INSTALLATION

1. Make sure frame and factory track bar bracket are smooth and free of any dirt, debris, and/or welding slag.
2. Slip bracket over factory track bar bracket aligning it with the 3 steering box bolts.
3. Start threading the steering box bolts through bracket, into the frame, and into the steering box, keep loose. We recommend using a drop of blue Loctite on these bolts. **Fig B.**
4. Use the provided 3/8"-16 x 1" bolts, washers, and nuts from the hardware kit. On the top hole, insert the bolt from the outside in. On the bottom hole it will be inserted from the inside out. **See Fig. C**

Fig. B

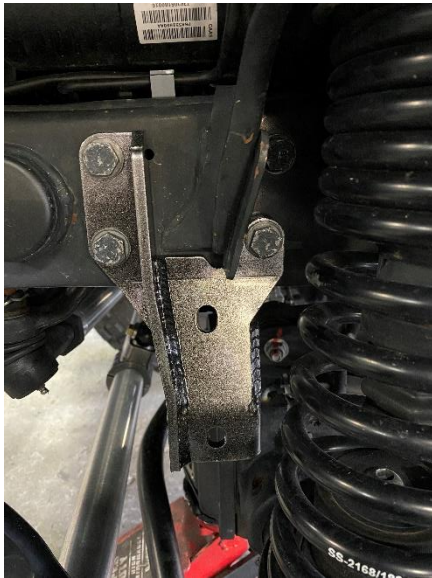


Fig. C



5. Snug up the 3 steering box bolts first, then tighten the 2 supplied 3/8" bolts.
6. Re insert track bar into factory bracket. Use the supplied M14x1.5x90mm G10.9 Bolt, washers, and nut and insert the same orientation that it was removed. You may need a bolt pin and/ or a hammer to align the holes up.
7. Torque all bolts. See chart below.

Bolt Torque Specs	
3/8" Hex bolt	50 ft-lb
M12 Steering Box Bolts	99 ft-lb
M14 Track Bar Bolt	125 ft-lb

8. Re install sway end bolts and torque to 59 ft. lbs.



10076 Streeter Road Suite #7, Auburn, CA 95602
Phone: 530.268.9494 www.wfoconcepts.com

Follow us on all Social Media platforms!

Remember to share your photos and tag #WFOCONCEPTS to be featured on our page!

