



Part #	Description
WFO 8920	JK Frame Tire Clearance Plates

10076 Streeter Road Suite #7, Auburn, CA 95602
 Phone: 530.268.9494 www.wfoconcepts.com

WFO 8920

BILL OF MATERIALS	
C-33000-D	Driverside Frame Plate
C-33000-P	Passengerside Frame Plate
TOOLS NEEDED	
Grinder with cut off wheels	
Welder	
Black Spray Paint	



WARNING!

*** Read all instructions thoroughly from start to finish before beginning the job! If these instructions are not properly followed, severe frame, suspension, tire, or body damage may result to the vehicle!

*** WFO Concepts recommends that you exercise extreme caution when working under vehicles supported by jack stands.

*** WFO Concepts recommends all installation to be performed by a professional shop/service technician. Product failure due to improper installation will not be covered under WFO's warranty policy.

TECH NOTES:

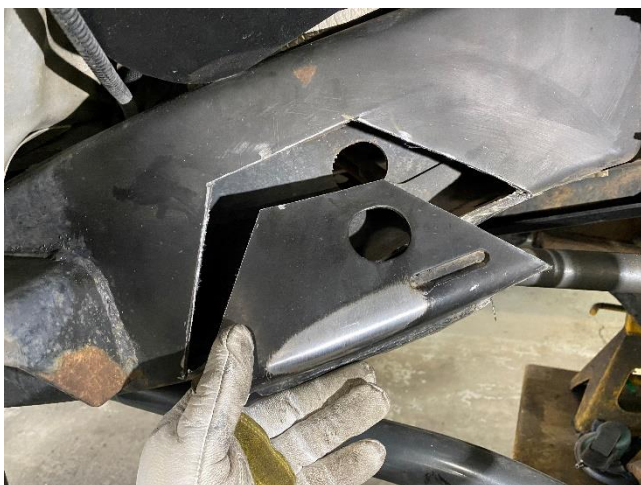
- Install time is roughly 2-3 hours
- Intended use of this kit is to clearance the frame to fit larger tires.
- Welding on frame rails should be done by a professional welder.
- Use caution when cutting under the vehicle. The factory undercoating, wires and your clothes are flammable! Take appropriate precautions.

START:

1. Make sure you are on level ground and you chock the rear tires.
2. Start by setting the front axle on jack stands and removing the front tires.
3. Cut out the paper template that is included in the instruction sheet to follow.
4. Start on either side and hold up the paper template, aligning the oval on the paper template with the hole in the frame. You will reuse this paper template for both sides, you will just flip it over. Try and line up the corners of the template to the corners of the frame.
5. Trace with something that's legible, like a silver sharpie, paint pen, or a soapstone pen.
Quick tip: Tape the top of the paper to your frame, trace the sides, and then wrap the bottom around to finish your lines.



6. Use a 4-1/2" grinder with a thin cutoff wheel and start to cut your frame along your lines. It's better to cut inside the lines and grind outwards later for better fitment.
7. Once cut out, clean your cuts up with a sanding wheel as well as the surrounding are free of any paint.
8. Find your new frame plate that best fits the side you're working on and start fitting it to your previously cut hole. Some extra trimming and grinding might be needed to best fit the new frame plates.



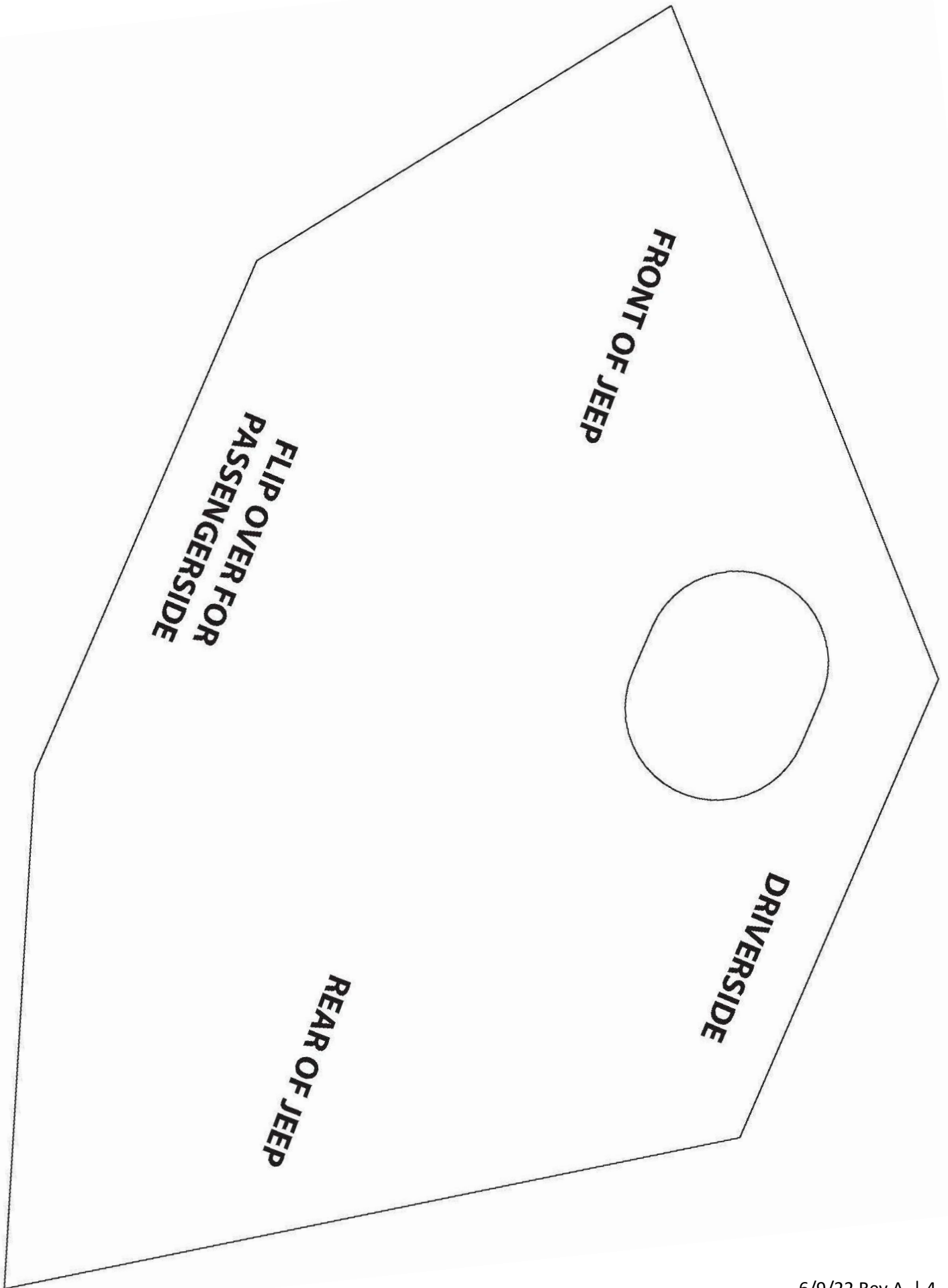
9. Once you're happy with the fitment of the plates, it's not a bad idea to throw a tire back on to double check clearance.



- 10. If everything looks good weld up the entire plate.
- 11. Grind smooth any imperfections and prep the area for paint.



- 12. Repeat on the opposite side.
- 13. Re install your wheels and torque to spec.





10076 Streater Road Suite #7, Auburn, CA 95602
Phone: 530.268.9494 www.wfoconcepts.com

Follow us on all Social Media Platforms!

Remember to share your photos and tag #WFOCONCEPTS to be featured on our page!

